



# What is DRHQ?

- A Destination Tourist Attraction
- A Heritage Attraction
- Urban Regeneration Scheme
- A Museum
- Place Making
- Community Initiative



## DRHQ Is

- All of these
- A Game Changer for the local community
- By 2025 will put Darlington and Tees Valley on the world map
- Legacy and catalyst to regenerate the area
- Modern Passenger Rail began here and changed the world connecting communities around the world
- No where else can claim this or has this collection of Historic Rail Assets
- No where else will have this unique attraction, DRHQ
- Where the Past meets the Future
- 2025 Tees Valley 2012 Olympics
- Celebration of Darlington's Heritage
- A key new visitor attraction in the Tees Valley



**DARLINGTON**  
Borough Council

# Social Value

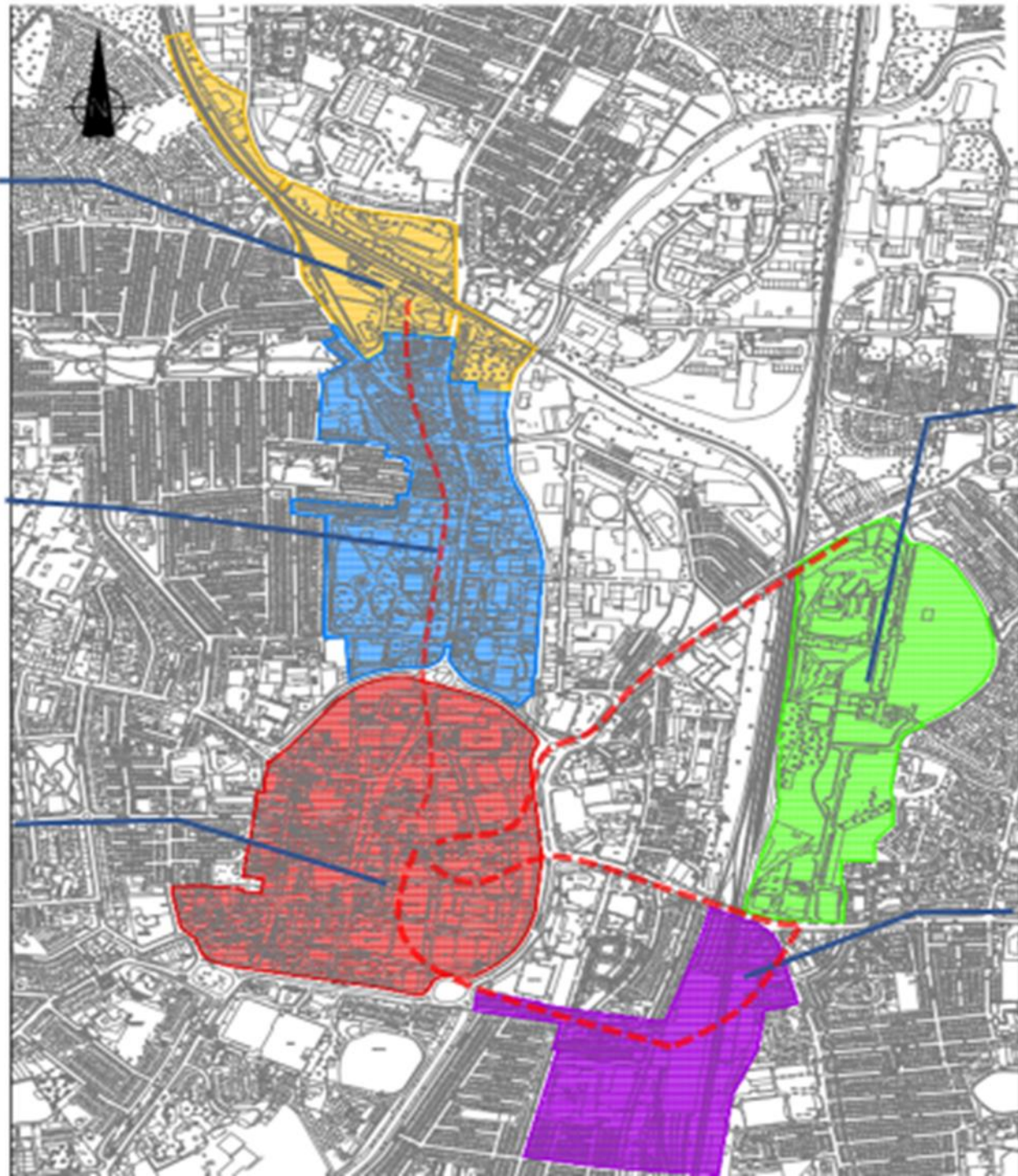
- Social value is the change created within communities that leads to improved well-being and quality of life as a result of a project
- Public realm improvements
- Community and green spaces
- New/upgraded museum and galleries
- Community hub
- Heritage asset enhancement
- Heritage tourism
- Rebranding of the town
- Careers and skills training/hubs
- Increased pride and cohesion in the locality



Rail Heritage  
Quarter

Skerne Valley  
& Liner Park

Town Centre



Central Park

Darlington  
Station & Cattle  
Market

# Timeline

- Planning October Committee
- November AMP
- December / January Cabinet and Council
- Quarter 1 2022 start on site
- Quarter 1 2023 HOS site
- Quarter 2/3 2024 completed





1. Access to the site from the main road network  
 2. Provision of a public car park  
 3. Provision of a public building  
 4. Provision of a public building  
 5. Provision of a public building  
 6. Provision of a public building  
 7. Provision of a public building  
 8. Provision of a public building  
 9. Provision of a public building  
 10. Provision of a public building  
 11. Provision of a public building  
 12. Provision of a public building  
 13. Provision of a public building  
 14. Provision of a public building  
 15. Provision of a public building  
 16. Provision of a public building  
 17. Provision of a public building  
 18. Provision of a public building  
 19. Provision of a public building  
 20. Provision of a public building  
 21. Provision of a public building  
 22. Provision of a public building

**SPACE**

1. Name of the space  
 2. Location  
 3. Description  
 4. Date









**DARLINGTON**  
Borough Council

# SPACE



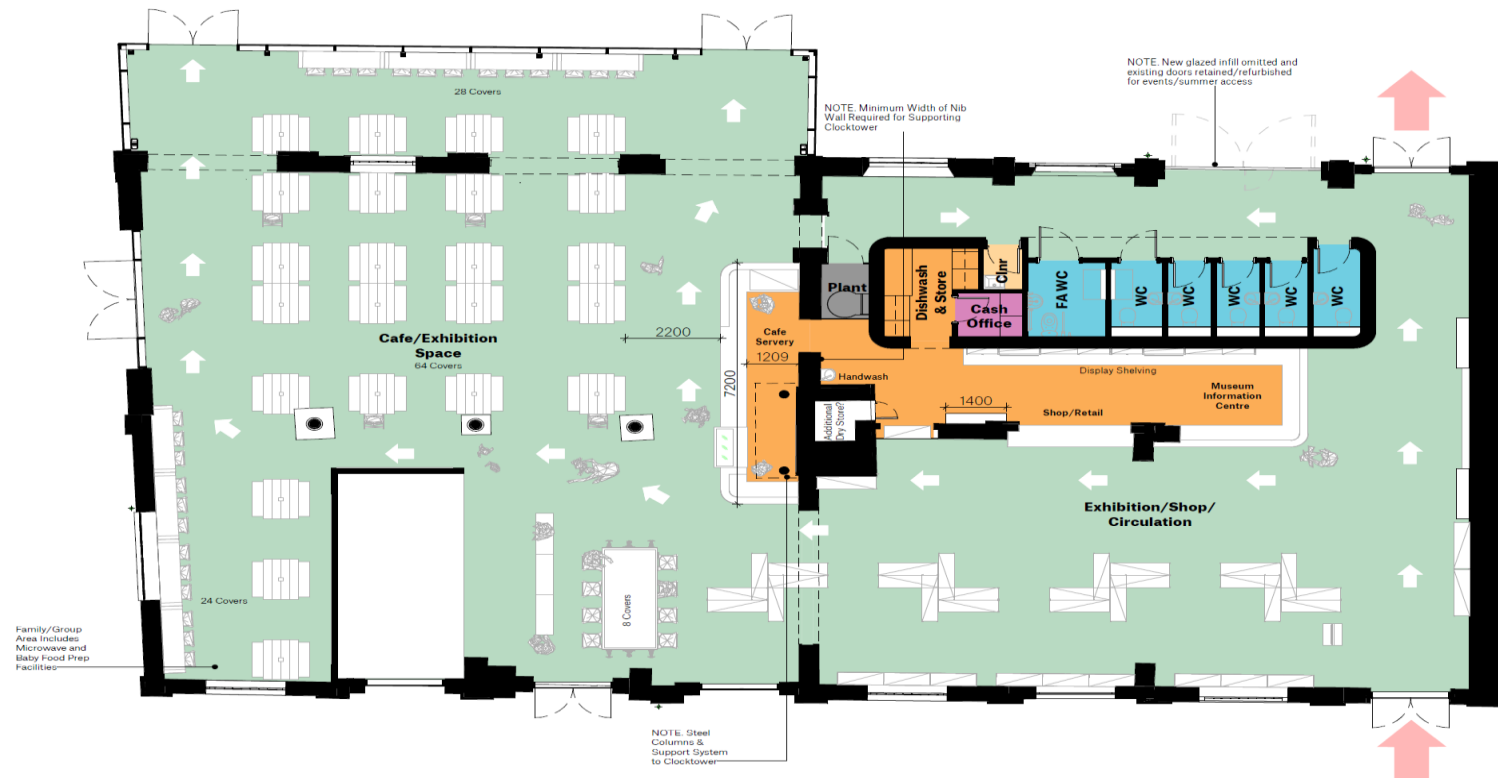


**DARLINGTON**  
Borough Council

**SPACE**



Revision	Description	Author	Checker	Date
P1	First Issue to Client/Consultant Team	CG	DC	12.06.2020
P2	Drawing Number Updated to Line Through with WD Numbering System	CG	DC	06.08.2020
P3	Model Updated Based Upon 360 Mapping Survey Model Received 01.09.2020	CG	DC	17.09.2020
P4	External Door Sets Added in Line with DRHQ-SPACE-Z1-00-DR-A-00003	CG	DC	05.11.2020
P5	Holograze added and furniture layout updated to reflect interpretation design	CG	DC	12.11.2020
P6	Client agreed changes in meeting with MC and AG on 26.11.2020 to WC pod to include dishwash area, cleaners store and cash office	CG	DC	26.11.2020
P7	Plan revised to incorporate client instructed changes to counter arrangement and WCs	CG	DC	12.05.2021
P8	Post Stage 3 VE Changes Incorporated	CG	DC	20.05.2021
P9	Planning and LBC application issue	CG	DC	11.06.2021



**WC Capacity Calculation:**  
**125 seats = 62.5 male/62.5 female.**  
 2 male (WCs no urinals) = 50 males  
 3 female = 60 females  
 Gives 110 people plus 1 FA provides flexibility for the additional 15 people

Accommodation Schedule		
Department	Name	Area
Museum Exhibition	Cafe/Exhibition Space	272 m <sup>2</sup>
Museum Exhibition	Exhibition/Shop/ Circulation	160 m <sup>2</sup>
Museum Exhibition: 2		432 m <sup>2</sup>
Plant	Plant	2 m <sup>2</sup>
Plant: 1		2 m <sup>2</sup>
Sanitary	FA WC	4 m <sup>2</sup>
Sanitary	WC	2 m <sup>2</sup>
Sanitary	WC	2 m <sup>2</sup>
Sanitary	WC	2 m <sup>2</sup>
Sanitary	WC	2 m <sup>2</sup>
Sanitary	WC	3 m <sup>2</sup>
Sanitary: 6		14 m <sup>2</sup>
Shop	Dishwash & Store	5 m <sup>2</sup>
Shop	Servery/Reception/Shop	29 m <sup>2</sup>
Shop	Servery/Reception/Shop	13 m <sup>2</sup>
Shop: 3		47 m <sup>2</sup>
Staff and Admin.	Cash Office	2 m <sup>2</sup>
Staff and Admin.: 1		2 m <sup>2</sup>
Storage	Clnr	1 m <sup>2</sup>
Storage: 1		1 m <sup>2</sup>
Grand total: 14		498 m <sup>2</sup>

**Ground Floor GA**  
**1:100**

NOTE:  
 Loose furniture and retail fit out by others.  
 For interpretation proposals refer to PLB proposals.



**SPACE**

Spaceworks, Benton Park Road, Newcastle upon Tyne, NE7 7LX  
 T: +44 (0)191 800 6660  
 www.spacearchitects.co.uk

Project: <b>Darlington Railway Heritage Quarter</b>				
Drawing Title: <b>GA Plan Proposed - Good Shed</b>				
Project No:	Drawing No:	Status:	Revision:	Scale at A2:
<b>K00231</b>	<b>Z1-00-DR-A-01101</b>	<b>S1</b>	<b>P9</b>	<b>1:100</b>
File Reference: <b>K00231-SPACE-Z1-00-DR-A-01101</b>				
This drawing is Copyright - Check all dimensions on site - Inform originator of any discrepancies - Work to figure of dimensions only - Do not scale				



**DARLINGTON**  
Borough Council

**SPACE**











THE  
A1 STEAM  
LOCOMOTIVE  
TRUST



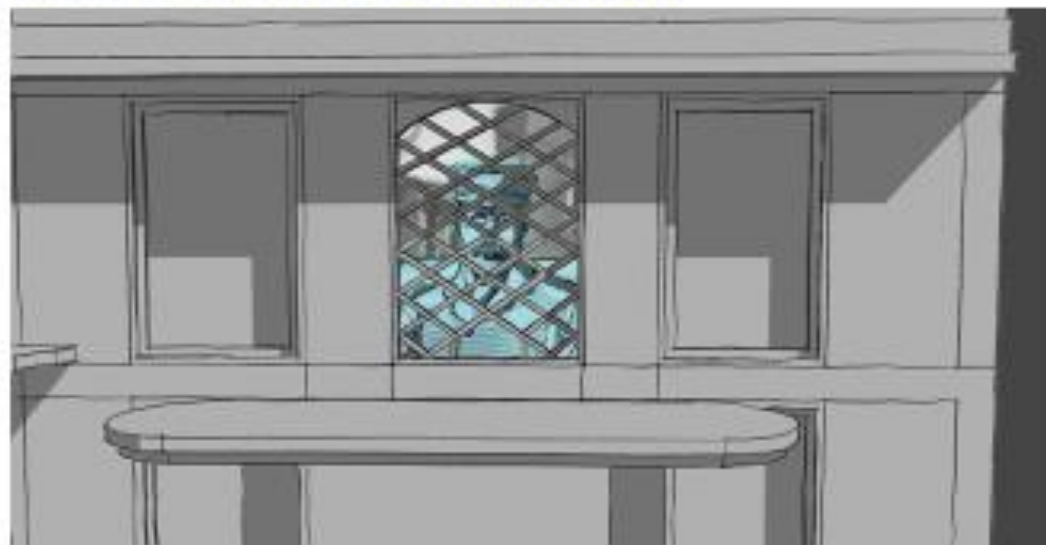




HOLOGAUZE ENGINES MOVE IN AND OUT THE GOODS SHED



TALKING BUSTS OF EDWARD PEAASE AND GEORGE STEPHENSON



THE OTHER GEORGE STEPHENSON HOLOGRAM WELCOMES VISITORS AT THE MUSEUM ENTRANCE LUCY MILNER TALKING PORTRAITS BRING THE REFRESHMENT ROOMS TO LIFE

## INTERVENTIONS THROUGHOUT THE HERITAGE RAILWAY QUARTER



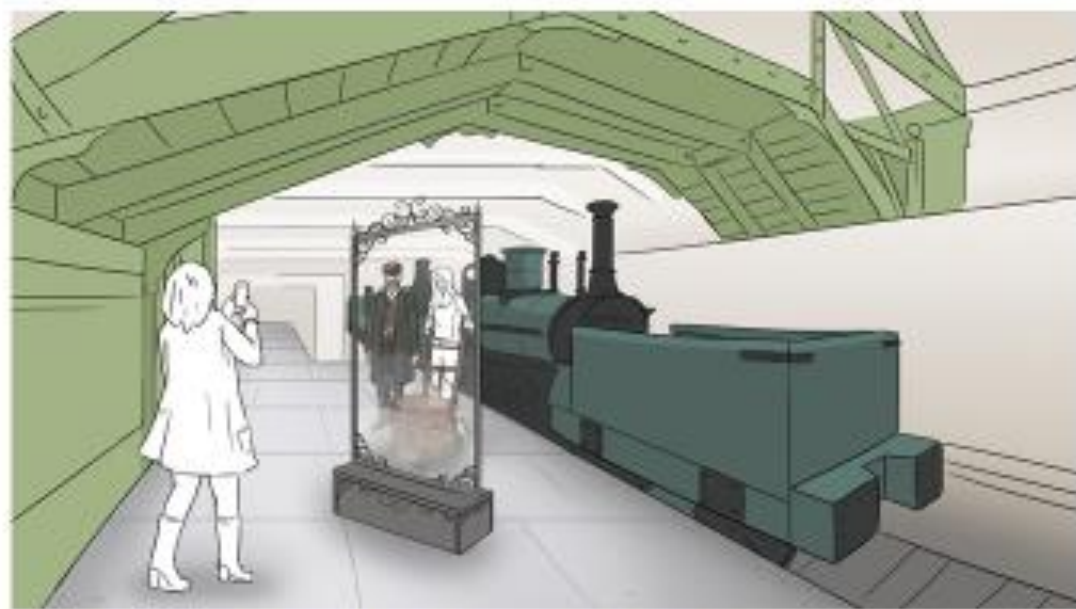
SEE YOURSELF IN THE VICTORIAN STATION



ROBERT GALE HOLGRAM IN THE WAITING ROOM



THE VICTORIAN STATION



MAGIC MIRRORS REVEAL THE PEOPLE OF THE HISTORIC STATION





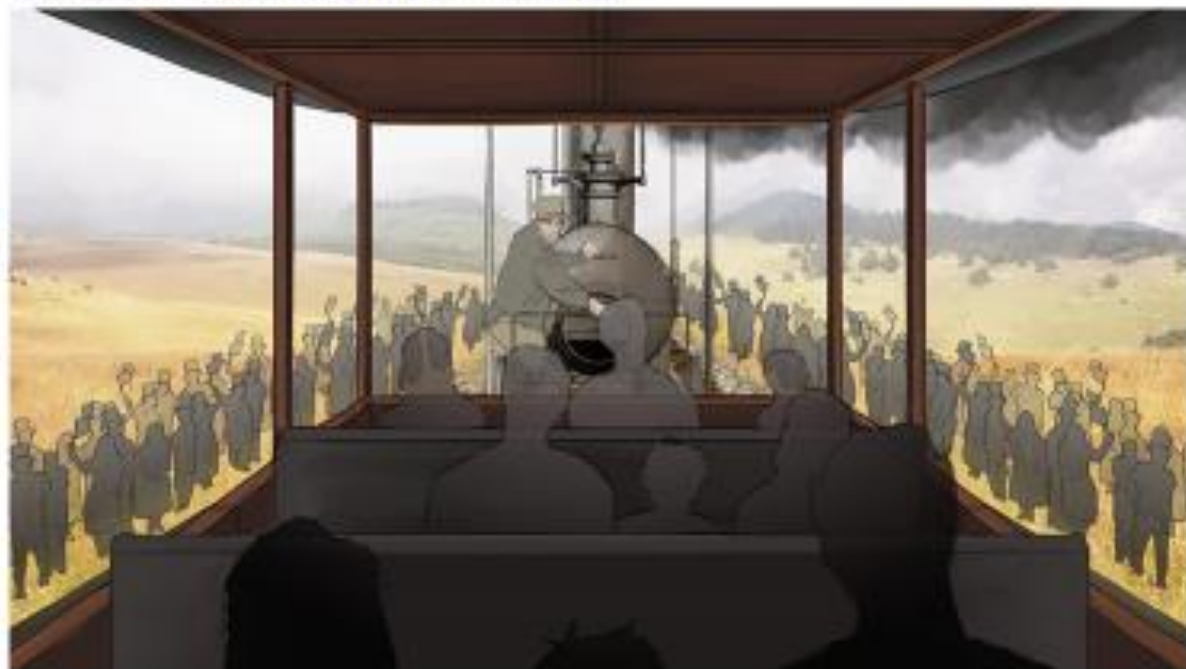
THE BLACKBOX BUILDING



VISITORS ARE TRANSPORTED BACK TO THE FIRST DAY



BLACKBOX EXPERIENCE



Interpreting the past  
designing the future™





Carriag

RAILWAY TOURING COMPANY  
60163  
ABSTEAM.COM



THE  
A1 STEAM  
LOCOMOTIVE  
TRUST

COLTON HALL









